


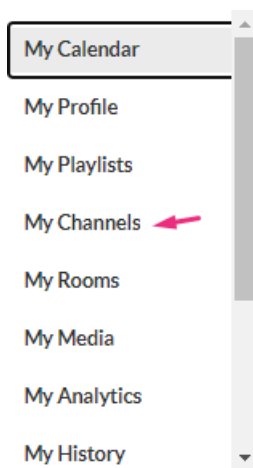
## Associate a channel to a gallery

 This article is designated for all users.

You can associate or 'publish' a channel to a [gallery / sub-gallery](#) depending on your entitlements. See our article [Understanding gallery roles and permissions](#) for more information.

 The [channelcategories module](#) must be enabled by your administrator to allow users to associate channels to galleries / categories.

1. From the user menu  select **My Channels**.



The **My Channels** page displays.

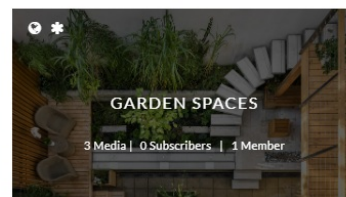
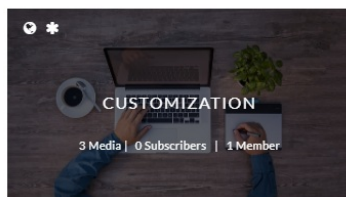
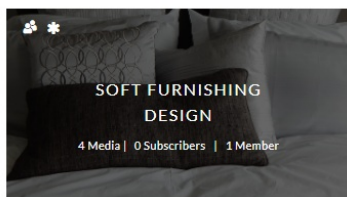
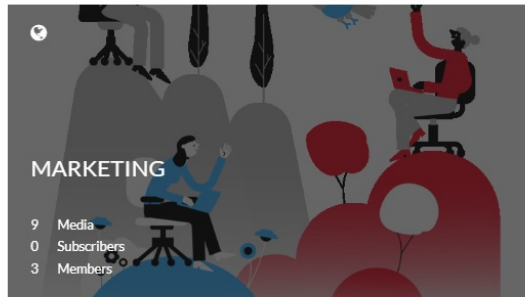
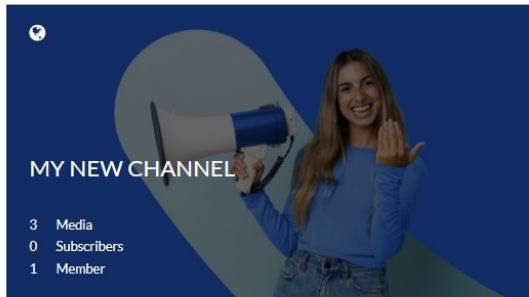
## My Channels

Search For Channels

Filters >

Sort By: Media Count ▾

+ Create Channel



2. Click the **pencil icon** on the channel you want to associate to a gallery or sub-gallery. You can also click the channel thumbnail, and from the Actions menu choose **Configure**.

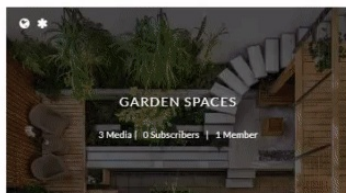
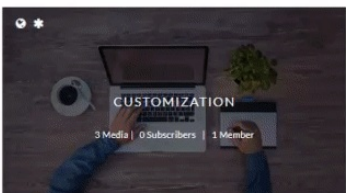
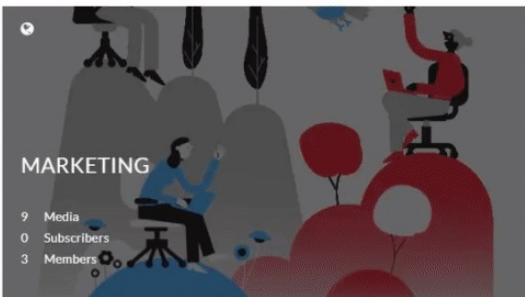
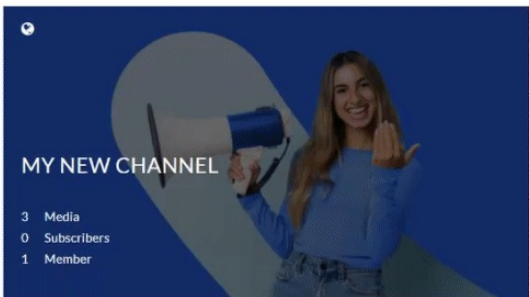
## My Channels

Search For Channels

Filters >

Sort By: Media Count ▾

+ Create Channel



The **Edit** page opens.

## Edit Soft furnishing design

Details
Theme
Playlists
Users
Collections
Advanced Settings

Name: (Required)
Soft furnishing design

Description:
Black
Bold
Italic
Underline

This project has a mixture of various soft furnishing elements. You can definitely get some inspiration.

Tags:

Privacy:
☐ Open - All logged in users can view and contribute content (contribution is not allowed for viewer-role users).
☐ Restricted - All logged in users can view content and only channel members can contribute content.
☐ Private - Only channel members can view and contribute content.
☐ Shared Repository - Only channel members can view and contribute content; Content may be published to other channels, according to publishing entitlements.
☐ Public, Restricted - Anyone can view content (including anonymous not logged-in users). Only channel members can contribute content according to their publishing entitlements.
☒ Public, Open - Anyone can view content (including anonymous not logged-in users) and all logged in users can contribute content.

Options:
☒ Enable comments in channel
☐ Keep comments private to channel.
☒ Enable subscription to channel (link to subscribe <https://4834032.mediaspace.kaltura.com/channel/Soft+furnishing+design/303958382/subscribe>)
☒ Enable Newrow Live Room

3. Scroll down to the **Categories** section.

4. Choose the gallery/s or sub-galleries that you want this channel will be associated with.

Categories:
Assign the channel to one or more categories:

☐ Art
☐ Artisan designs
☐ New sub-gallery
☒ Interiors
☐ Lifestyle
☐ Projects
☐ Open Gallery
☐ Storytelling

Save
Back to Channel

5. Click **Save**.

A success message displays: *Your information was saved successfully.*

The information was saved successfully

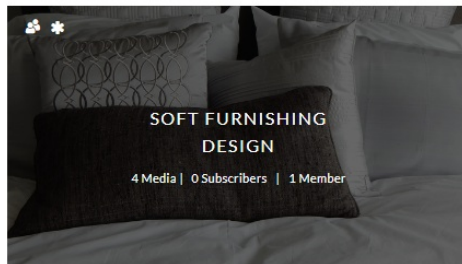
Navigate to the gallery to see that your channel has been published.

## Interiors

Everything about interiors.

15 Media **1 Channel** 2 Pending

Sort by Media Count ▾ View All Topics ▾



[template("cat-subscribe")]